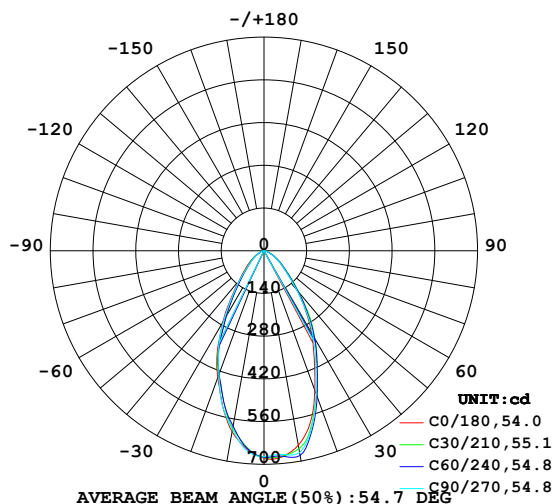


LUMINAIRE PHOTOMETRIC TEST REPORT

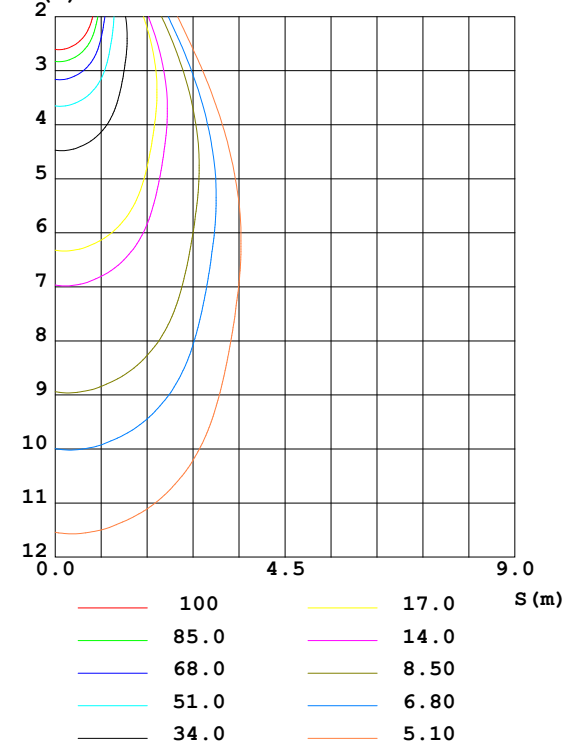
Test:U:230.13V I:0.0386A P:6.8163W PF:0.7678 Freq:50.00Hz Lamp Flux:685.311x1 lm					
NAME: Guard-7W		TYPE:4000K		WEIGHT:	
SPEC.:		DIM.:		SERIAL No.:	
MFR.:		SUR.:		Shielding Angle:	

DATA OF LAMP		PHOTOMETRIC DATA				Eff: 100.54 lm/W
MODEL		I _{max} (cd)	684.7	S/MH (C0/180)	0.79	
NOMINAL POWER (W)	7	LOR (%)	100.0	S/MH (C90/270)	0.77	
RATED VOLTAGE (V)	230	TOTAL FLUX (lm)	685.31	η UP,DN (C0-180)	0.3,52.7	
NOMINAL FLUX (lm)	685.311	CIE CLASS	DIRECT	η UP,DN (C180-360)	0.3,46.8	
LAMPS INSIDE	1	η up (%)	0.5	CIBSE SHR NOM	0.75	
TEST VOLTAGE (V)	230.1	η down (%)	99.5	CIBSE SHR MAX	0.90	

LUMINOUS INTENSITY DISTRIBUTION DIAGRAM



C0 PLANE ISOLUX DIAGRAM (UNIT:lx)



C Range: 0 - 360DEG
C Interval: 15.0DEG
Test Speed: HIGH
Temperature:25.3DEG
Operators:Bob
Test Date:2022-07-20

γ Range: 0 - 180DEG
γ Interval: 1.0DEG
Test System:EVERFINE GO-2000B_V1 SYSTEM V2.0.270
Humidity:65.0%
Test Distance:7.030m [K=1.0000]
Remarks:

ZONAL FLUX DIAGRAM

ZONAL FLUX DIAGRAM:

γ	C0	C45	C90	C135	C180	C225	C270	C315	γ	Φ zone	Φ total	%lum, lamp
10	647.3	673.4	671.6	623.8	601.7	584.8	596.2	641.6	0- 10	62.30	62.30	9.09,9.09
20	487.2	514.0	498.6	441.0	442.3	427.0	431.5	491.1	10- 20	154.5	216.8	31.6,31.6
30	311.7	338.1	320.6	294.9	270.1	238.6	264.0	318.5	20- 30	173.6	390.5	57,57
40	167.2	177.5	164.2	147.3	126.2	111.1	121.6	144.3	30- 40	133.1	523.6	76.4,76.4
50	78.33	87.58	80.21	74.40	66.13	56.48	55.48	68.57	40- 50	78.12	601.7	87.8,87.8
60	40.00	43.24	38.46	34.93	31.68	27.08	28.01	35.61	50- 60	46.11	647.8	94.5,94.5
70	15.71	16.71	13.76	12.65	12.42	11.42	12.29	15.51	60- 70	22.83	670.6	97.9,97.9
80	5.133	5.366	4.564	3.902	3.949	3.611	4.377	5.400	70- 80	9.095	679.7	99.2,99.2
90	0.1571	0.0623	0.0071	0.0105	0.0070	0.0139	0.0069	0.3617	80- 90	2.019	681.7	99.5,99.5
100	0.0139	0.0279	0.0070	0.0488	0.0489	0.0209	0.0384	0.0105	90-100	0.0211	681.7	99.5,99.5
110	0.0834	0.0871	0.0592	0.1220	0.1290	0.1010	0.1255	0.0800	100-110	0.0591	681.8	99.5,99.5
120	0.1986	0.2057	0.1812	0.2650	0.2895	0.2788	0.2860	0.2196	110-120	0.1577	682.0	99.5,99.5
130	0.4528	0.4322	0.4214	0.5473	0.5787	0.5818	0.5822	0.4842	120-130	0.3219	682.3	99.6,99.6
140	0.8642	0.8264	0.8328	0.9972	1.029	1.049	1.032	0.8992	130-140	0.5467	682.8	99.6,99.6
150	1.415	1.359	1.387	1.555	1.600	1.620	1.593	1.436	140-150	0.7549	683.6	99.7,99.7
160	1.983	1.942	1.966	2.113	2.169	2.185	2.144	2.004	150-160	0.8156	684.4	99.9,99.9
170	2.523	2.506	2.502	2.600	2.621	2.610	2.593	2.495	160-170	0.6508	685.1	100,100
180	2.820	2.813	2.788	2.785	2.820	2.809	2.792	2.785	170-180	0.2546	685.3	100,100
DEG	LUMINOUS INTENSITY:cd									UNIT:lm		

Conical surface Flux(90deg): 567.85 lm

%lum = 82.9%

%lamp = 82.9%

Conical surface Flux(120deg): 647.79 lm

%lum = 94.5%

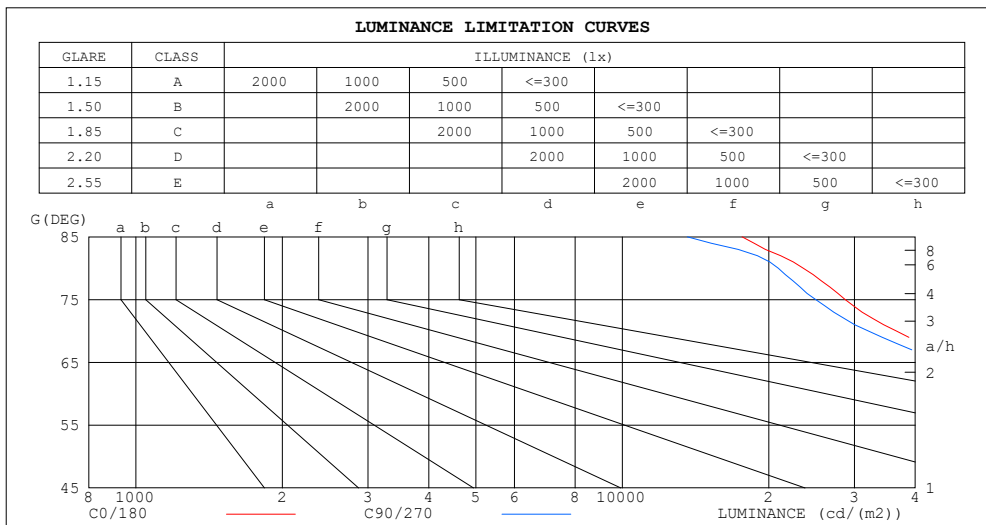
%lamp = 94.5%

C Range: 0 - 360DEG
 C Interval: 15.0DEG
 Test Speed: HIGH
 Temperature:25.3DEG
 Operators:Bob
 Test Date:2022-07-20

γ Range: 0 - 180DEG
 γ Interval: 1.0DEG
 Test System:EVERFINE GO-2000B_V1 SYSTEM V2.0.270
 Humidity:65.0%
 Test Distance:7.030m [K=1.0000]
 Remarks:

LUMINANCE LIMITATION CURVES

Test:U:230.13V I:0.0386A P:6.8163W PF:0.7678 Freq:50.00Hz Lamp Flux:685.311x1 lm		
NAME: Guard-7W	TYPE:4000K	WEIGHT:
SPEC.:	DIM.:	SERIAL No.:
MFR.:	SUR.:	Shielding Angle:



LUMINANCE cd/(m2)		
G (DEG)	C0/180	C90/270
85	17621	13608
80	23536	20926
75	28714	24971
70	36577	32033
65	49014	45254
60	63692	61249
55	79807	79193
50	97027	99350
45	126556	126457

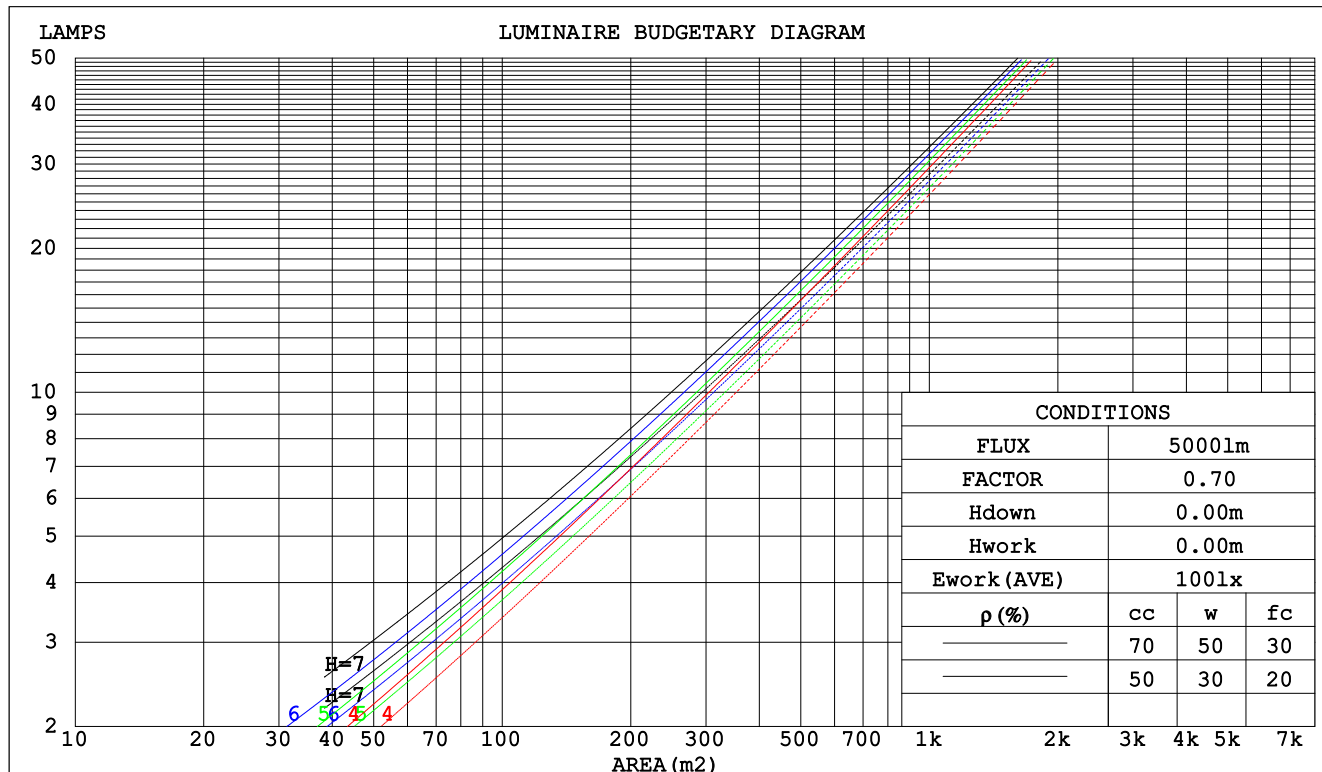
C Range: 0 - 360DEG
C Interval: 15.0DEG
Test Speed: HIGH
Temperature:25.3DEG
Operators:Bob
Test Date:2022-07-20

γ Range: 0 - 180DEG
γ Interval: 1.0DEG
Test System:EVERFINE GO-2000B_V1 SYSTEM V2.0.270
Humidity:65.0%
Test Distance:7.030m [K=1.0000]
Remarks:

CU AND LUMINAIRE BUDGETARY ESTIMATE DIAGRAM

Test:U:230.13V I:0.0386A P:6.8163W PF:0.7678 Freq:50.00Hz Lamp Flux:685.311x1 lm		
NAME: Guard-7W	TYPE:4000K	WEIGHT:
SPEC.:	DIM.:	SERIAL No.:
MFR.:	SUR.:	Shielding Angle:

pcc	80%			70%			50%			30%			10%			0
pw	50%	30%	10%	50%	30%	10%	50%	30%	10%	50%	30%	10%	50%	30%	10%	0
pfc	20%			20%			20%			20%			20%			0
RCR	Coefficients of Utilization(CU)															
0.0	1.19	1.19	1.19	1.16	1.16	1.16	1.11	1.11	1.11	1.06	1.06	1.06	1.02	1.02	1.02	.99
1.0	1.09	1.06	1.03	1.07	1.04	1.02	1.02	1.00	.98	.99	.97	.95	.95	.94	.93	.91
2.0	.00	.95	.91	.98	.93	.90	.94	.91	.88	.91	.88	.86	.88	.86	.84	.82
3.0	.91	.86	.81	.90	.85	.80	.87	.83	.79	.85	.81	.77	.82	.79	.76	.74
4.0	.84	.78	.73	.83	.77	.72	.81	.75	.71	.78	.74	.70	.76	.73	.70	.68
5.0	.78	.71	.66	.77	.71	.66	.75	.69	.65	.73	.68	.65	.71	.67	.64	.62
6.0	.72	.65	.61	.71	.65	.60	.70	.64	.60	.68	.63	.59	.67	.62	.59	.57
7.0	.67	.61	.56	.67	.60	.56	.65	.59	.55	.64	.59	.55	.63	.58	.55	.53
8.0	.63	.56	.52	.62	.56	.52	.61	.55	.51	.60	.55	.51	.59	.54	.51	.49
9.0	.59	.53	.48	.59	.52	.48	.58	.52	.48	.57	.51	.48	.56	.51	.47	.46
10.0	.56	.49	.45	.55	.49	.45	.54	.49	.45	.53	.48	.45	.53	.48	.44	.43



C Range: 0 - 360DEG
 C Interval: 15.0DEG
 Test Speed: HIGH
 Temperature:25.3DEG
 Operators:Bob
 Test Date:2022-07-20

γ Range: 0 - 180DEG
 γ Interval: 1.0DEG
 Test System:EVERFINE GO-2000B_V1 SYSTEM V2.0.270
 Humidity:65.0%
 Test Distance:7.030m [K=1.0000]
 Remarks:

WEC AND CCEC

Test:U:230.13V I:0.0386A P:6.8163W PF:0.7678 Freq:50.00Hz Lamp Flux:685.311x1 lm								
NAME: Guard-7W			TYPE:4000K			WEIGHT:		
SPEC.:			DIM.:			SERIAL No.:		
MFR.:			SUR.:			Shielding Angle:		

pcc	80%			70%			50%			30%			10%			0	
pw	50%	30%	10%	50%	30%	10%	50%	30%	10%	50%	30%	10%	50%	30%	10%	0	
pfc	20%			20%			20%			20%			20%			0	
RCR	RCR:Room Cavity Ratio						Wall Exitance Coefficients(WEC)										
0.0																	
1.0	.211	.120	.038	.204	.116	.037	.190	.109	.035	.178	.103	.033	.167	.097	.031		
2.0	.202	.111	.034	.197	.108	.033	.185	.103	.032	.175	.098	.031	.166	.094	.030		
3.0	.192	.102	.031	.187	.100	.030	.177	.096	.029	.168	.092	.028	.160	.089	.027		
4.0	.181	.094	.028	.177	.093	.027	.169	.089	.027	.161	.086	.026	.153	.083	.025		
5.0	.172	.087	.025	.168	.086	.025	.160	.083	.025	.153	.081	.024	.147	.078	.024		
6.0	.162	.081	.023	.159	.080	.023	.152	.078	.023	.146	.076	.022	.140	.074	.022		
7.0	.154	.076	.022	.151	.075	.021	.145	.073	.021	.139	.071	.021	.134	.070	.020		
8.0	.146	.071	.020	.143	.070	.020	.138	.069	.020	.133	.067	.019	.128	.066	.019		
9.0	.139	.067	.019	.136	.066	.019	.132	.065	.018	.127	.064	.018	.123	.062	.018		
10.0	.132	.063	.018	.130	.063	.018	.126	.062	.017	.122	.060	.017	.118	.059	.017		

pcc	80%			70%			50%			30%			10%			0
pw	50%	30%	10%	50%	30%	10%	50%	30%	10%	50%	30%	10%	50%	30%	10%	0
pfc	20%			20%			20%			20%			20%			0
RCR	RCR:Room Cavity Ratio						Ceiling Cavity Exitance Coefficients (CCEC)									
0.0	.194	.194	.194	.166	.166	.166	.113	.113	.113	.065	.065	.065	.021	.021	.021	
1.0	.177	.161	.146	.152	.138	.126	.104	.095	.087	.060	.055	.051	.019	.018	.016	
2.0	.164	.136	.113	.141	.117	.098	.096	.081	.068	.056	.047	.040	.018	.015	.013	
3.0	.154	.118	.089	.132	.102	.077	.090	.071	.054	.052	.041	.032	.017	.013	.010	
4.0	.144	.104	.072	.124	.089	.063	.085	.062	.044	.049	.037	.026	.016	.012	.009	
5.0	.136	.092	.060	.117	.080	.052	.081	.056	.037	.047	.033	.022	.015	.011	.007	
6.0	.129	.083	.051	.111	.072	.044	.076	.051	.031	.044	.030	.019	.014	.010	.006	
7.0	.123	.076	.043	.105	.066	.038	.073	.046	.027	.042	.027	.016	.014	.009	.005	
8.0	.117	.070	.038	.100	.061	.033	.069	.043	.023	.040	.025	.014	.013	.008	.005	
9.0	.111	.065	.033	.096	.056	.029	.066	.040	.021	.039	.023	.012	.013	.008	.004	
10.0	.106	.061	.030	.092	.053	.026	.064	.037	.019	.037	.022	.011	.012	.007	.004	

C Range: 0 - 360DEG
C Interval: 15.0DEG
Test Speed: HIGH
Temperature:25.3DEG
Operators:Bob
Test Date:2022-07-20

γ Range: 0 - 180DEG
γ Interval: 1.0DEG
Test System:EVERFINE GO-2000B_V1 SYSTEM V2.0.270
Humidity:65.0%
Test Distance:7.030m [K=1.0000]
Remarks:

UGR(Unified Glare Rating) Table

Test:U:230.13V I:0.0386A P:6.8163W PF:0.7678 Freq:50.00Hz Lamp Flux:685.311x1 lm											
NAME: Guard-7W					TYPE:4000K			WEIGHT:			
SPEC.:					DIM.:			SERIAL No.:			
MFR.:					SUR.:			Shielding Angle:			
ceiling/cavity	0.7	0.7	0.5	0.5	0.3	0.7	0.7	0.5	0.5	0.3	
walls	0.5	0.3	0.5	0.3	0.3	0.5	0.3	0.5	0.3	0.3	
working plane	0.2	0.2	0.2	0.2	0.2	0.2	0.2	0.2	0.2	0.2	
Room dimensions		Viewed crosswise					Viewed endwise				
x = 2H y = 2H	28.3	29.4	28.5	29.6	29.8	28.1	29.2	28.4	29.4	29.6	
	3H	28.6	29.6	28.9	29.8	30.0	28.4	29.4	28.6	29.6	29.8
	4H	28.6	29.6	28.9	29.8	30.1	28.4	29.3	28.7	29.6	29.8
	6H	28.7	29.6	29.0	29.8	30.1	28.4	29.3	28.7	29.5	29.8
	8H	28.6	29.5	29.0	29.8	30.1	28.4	29.2	28.7	29.5	29.8
	12H	28.6	29.4	29.0	29.7	30.0	28.3	29.2	28.7	29.5	29.7
4H	2H	28.4	29.4	28.7	29.6	29.9	28.3	29.2	28.6	29.5	29.7
	3H	28.8	29.6	29.1	29.9	30.2	28.6	29.4	28.9	29.7	30.0
	4H	28.9	29.7	29.3	30.0	30.3	28.7	29.4	29.0	29.7	30.1
	6H	29.0	29.7	29.4	30.0	30.4	28.7	29.4	29.1	29.7	30.1
	8H	29.0	29.6	29.4	30.0	30.4	28.7	29.3	29.1	29.7	30.1
	12H	29.0	29.6	29.4	29.9	30.3	28.7	29.3	29.1	29.7	30.1
8H	4H	28.9	29.5	29.3	29.9	30.3	28.7	29.3	29.1	29.6	30.0
	6H	29.0	29.5	29.5	29.9	30.4	28.8	29.3	29.2	29.7	30.1
	8H	29.1	29.5	29.5	29.9	30.4	28.8	29.2	29.2	29.7	30.1
	12H	29.1	29.5	29.5	29.9	30.4	28.8	29.2	29.3	29.6	30.1
12H	4H	28.9	29.4	29.3	29.8	30.2	28.6	29.2	29.0	29.6	30.0
	6H	29.0	29.4	29.5	29.9	30.3	28.7	29.2	29.2	29.6	30.1
	8H	29.0	29.4	29.5	29.9	30.4	28.8	29.2	29.3	29.6	30.1
Variations with the observer position at spacings:											
S = 1.0H	+ 1.0 / - 1.4					+ 1.0 / - 1.5					
1.5H	+ 1.3 / - 1.1					+ 1.2 / - 0.9					
2.0H	+ 1.7 / - 1.4					+ 1.7 / - 1.5					

CIE Pub.117, 685.3 lm Total Lamp Luminous Flux Correct (8log(F/F0) = -1.3)
Area: 0.001256 m2

C Range: 0 - 360DEG
C Interval: 15.0DEG
Test Speed: HIGH
Temperature:25.3DEG
Operators:Bob
Test Date:2022-07-20

γ Range: 0 - 180DEG
γ Interval: 1.0DEG
Test System:EVERFINE GO-2000B_V1 SYSTEM V2.0.270
Humidity:65.0%
Test Distance:7.030m [K=1.0000]
Remarks:

UTILIZATION FACTORS TABLE

Test:U:230.13V I:0.0386A P:6.8163W PF:0.7678 Freq:50.00Hz Lamp Flux:685.311x1 lm		
NAME: Guard-7W	TYPE:4000K	WEIGHT:
SPEC.:	DIM.:	SERIAL No.:
MFR.:	SUR.:	Shielding Angle:

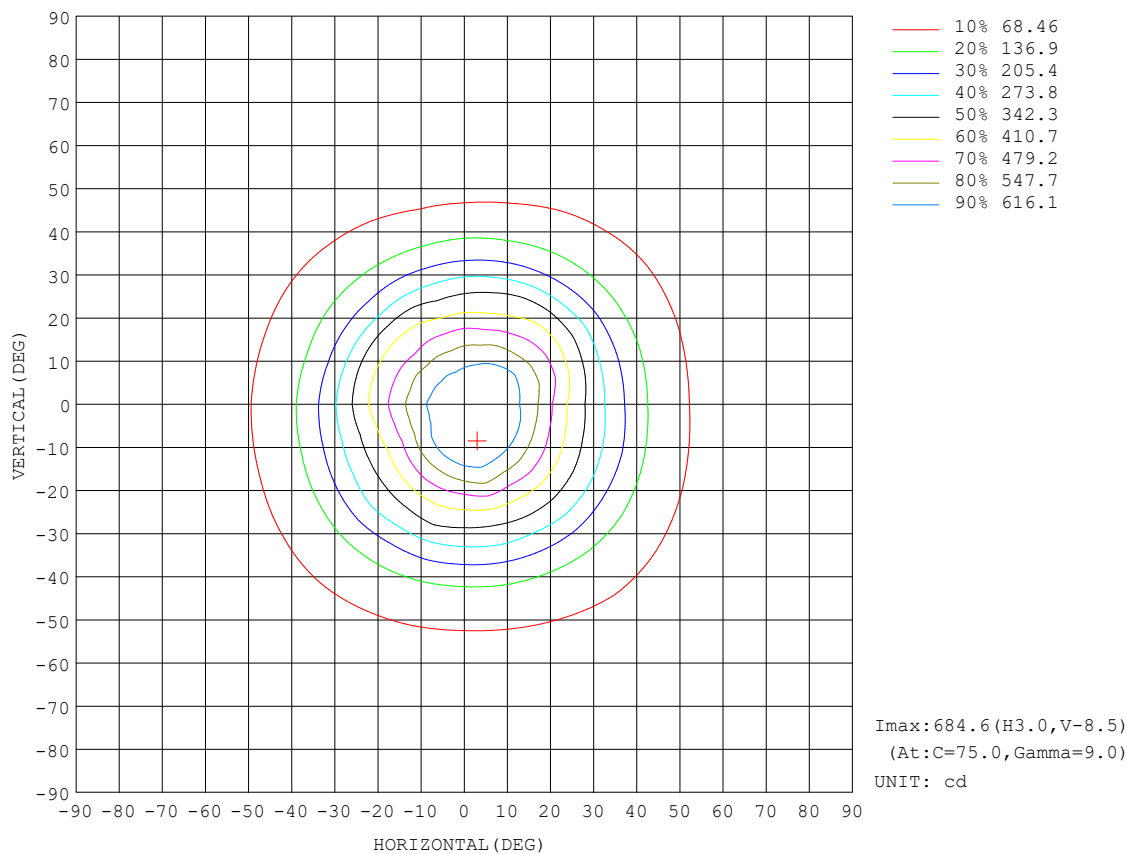
REFLECTANCE										
Ceiling	0.8	0.8	0.8	0.7	0.7	0.7	0.5	0.5	0.5	0
Walls	0.7	0.5	0.3	0.7	0.5	0.3	0.7	0.5	0.3	0
Working plane	0.2	0.2	0.2	0.2	0.2	0.2	0.2	0.2	0.2	0
ROOM INDEX	UTILIZATION FACTORS (PERCENT) $k(RI) \times RCR = 5$									
$k = 0.60$	77	68	64	76	68	63	75	68	63	59
0.80	85	78	73	85	77	72	83	76	72	67
1.00	92	84	79	91	84	79	89	84	79	74
1.25	97	90	85	96	89	85	93	88	84	79
1.50	100	94	90	99	93	89	96	92	88	82
2.00	104	99	95	103	98	94	100	96	93	86
2.50	107	102	98	105	101	97	102	98	95	88
3.00	109	105	101	107	103	100	103	100	98	90
4.00	111	108	105	109	106	103	105	103	101	93
5.00	113	110	107	111	108	106	106	104	103	94
ROOM INDEX	UF(total)									Direct
According to DIN EN 13032-2 2004			Suspended					SHRNOM = 1.25		

C Range: 0 - 360DEG
C Interval: 15.0DEG
Test Speed: HIGH
Temperature:25.3DEG
Operators:Bob
Test Date:2022-07-20

γ Range: 0 - 180DEG
 γ Interval: 1.0DEG
Test System:EVERFINE GO-2000B_V1 SYSTEM V2.0.270
Humidity:65.0%
Test Distance:7.030m [K=1.0000]
Remarks:

ISOCANDELA DIAGRAM

Test:U:230.13V I:0.0386A P:6.8163W PF:0.7678 Freq:50.00Hz Lamp Flux:685.311x1 lm		
NAME: Guard-7W	TYPE:4000K	WEIGHT:
SPEC.:	DIM.:	SERIAL No.:
MFR.:	SUR.:	Shielding Angle:

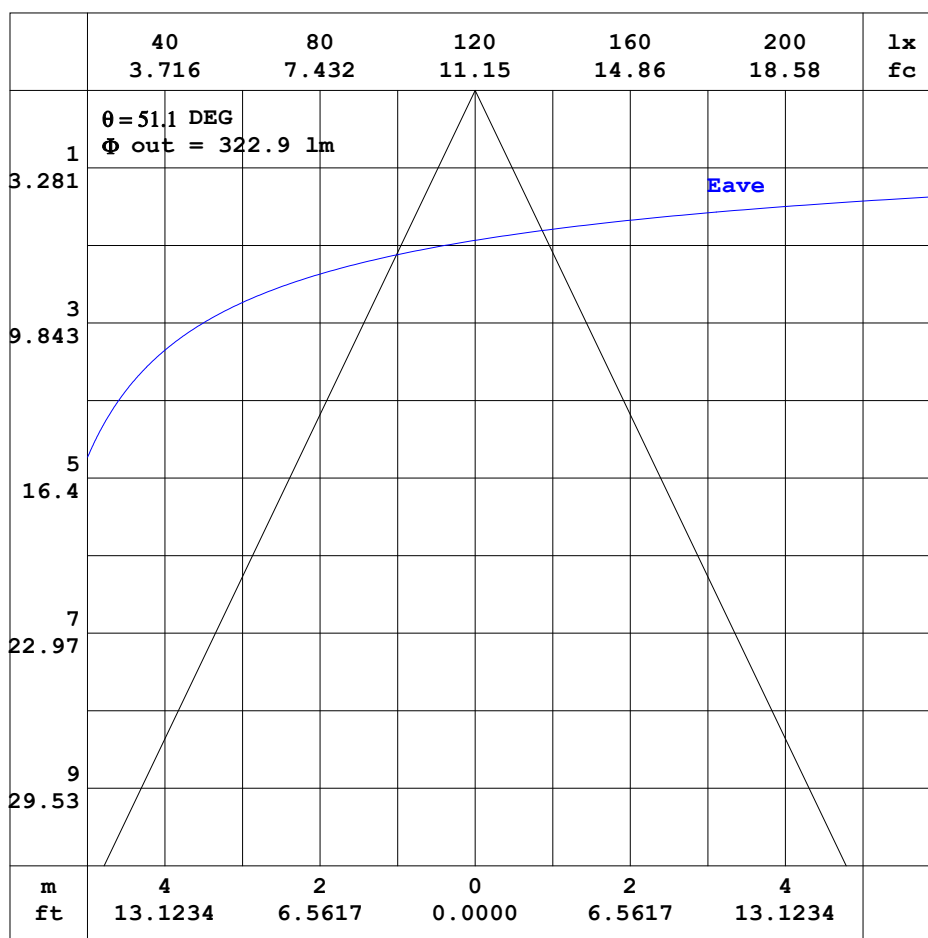


C Range: 0 - 360DEG
C Interval: 15.0DEG
Test Speed: HIGH
Temperature:25.3DEG
Operators:Bob
Test Date:2022-07-20

γ Range: 0 - 180DEG
γ Interval: 1.0DEG
Test System:EVERFINE GO-2000B_V1 SYSTEM V2.0.270
Humidity:65.0%
Test Distance:7.030m [K=1.0000]
Remarks:

AAI CURVES

Test:U:230.13V I:0.0386A P:6.8163W PF:0.7678 Freq:50.00Hz Lamp Flux:685.311x1 lm		
NAME: Guard-7W	TYPE:4000K	WEIGHT:
SPEC.:	DIM.:	SERIAL No.:
MFR.:	SUR.:	Shielding Angle:



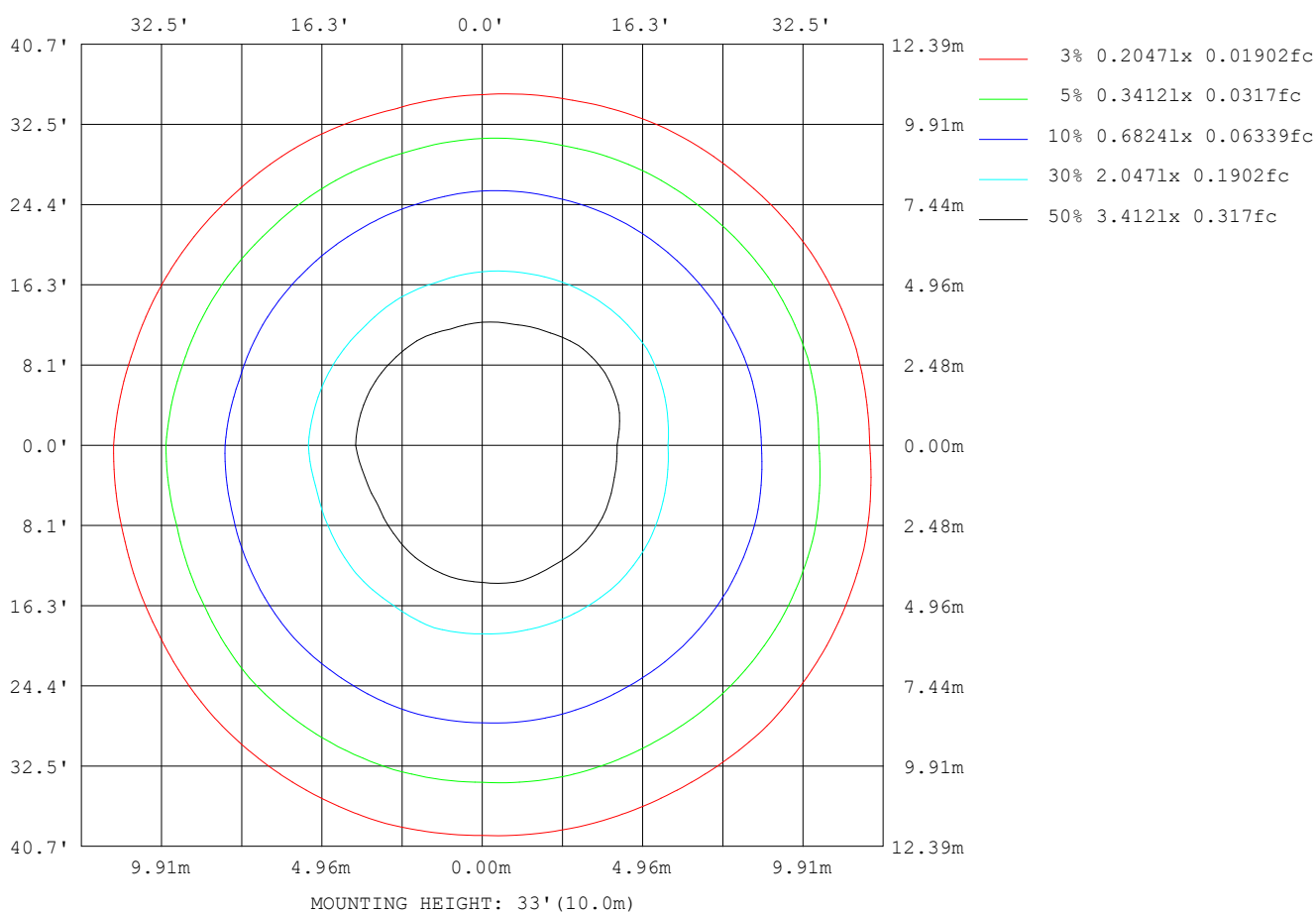
Note:The Curves indicate the illuminated area and the average illumination when the luminaire is at different distance.

C Range: 0 - 360DEG
C Interval: 15.0DEG
Test Speed: HIGH
Temperature:25.3DEG
Operators:Bob
Test Date:2022-07-20

γ Range: 0 - 180DEG
γ Interval: 1.0DEG
Test System:EVERFINE GO-2000B_V1 SYSTEM V2.0.270
Humidity:65.0%
Test Distance:7.030m [K=1.0000]
Remarks:

ISOLUX DIAGRAM

Test:U:230.13V I:0.0386A P:6.8163W PF:0.7678 Freq:50.00Hz Lamp Flux:685.311x1 lm		
NAME: Guard-7W	TYPE:4000K	WEIGHT:
SPEC.:	DIM.:	SERIAL No.:
MFR.:	SUR.:	Shielding Angle:



C Range: 0 - 360DEG
C Interval: 15.0DEG
Test Speed: HIGH
Temperature:25.3DEG
Operators:Bob
Test Date:2022-07-20

γ Range: 0 - 180DEG
γ Interval: 1.0DEG
Test System:EVERFINE GO-2000B_V1 SYSTEM V2.0.270
Humidity:65.0%
Test Distance:7.030m [K=1.0000]
Remarks:

LED Avg.L Report

Test:U:230.13V I:0.0386A P:6.8163W PF:0.7678 Freq:50.00Hz Lamp Flux:685.311x1 lm		
NAME: Guard-7W	TYPE:4000K	WEIGHT:
SPEC.:	DIM.:	SERIAL No.:
MFR.:	SUR.:	Shielding Angle:

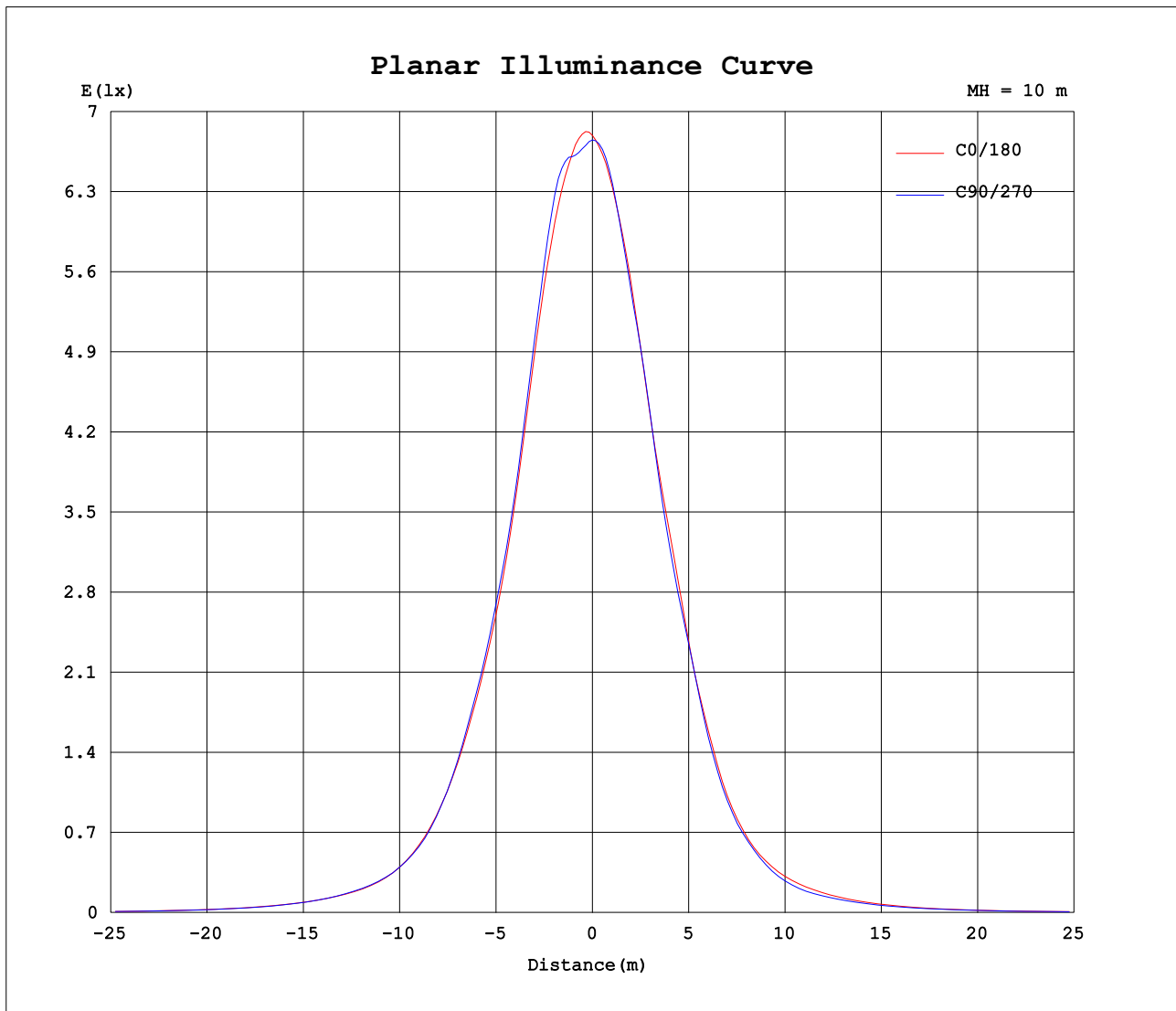
AvgL	cd/m2
L_0~180 (65) av	43450
L_0~180 (75) av	25912
L_0~180 (85) av	14378
L_90~270 (65) av	40058
L_90~270 (75) av	25081
L_90~270 (85) av	14119
L_45 (65) av	42995
L_45 (75) av	25980
L_45 (85) av	15509

Standard: GB/T 29293-2012

C Range: 0 - 360DEG
C Interval: 15.0DEG
Test Speed: HIGH
Temperature:25.3DEG
Operators:Bob
Test Date:2022-07-20

γ Range: 0 - 180DEG
γ Interval: 1.0DEG
Test System:EVERFINE GO-2000B_V1 SYSTEM V2.0.270
Humidity:65.0%
Test Distance:7.030m [K=1.0000]
Remarks:

Planar Illuminance Curve



C Range: 0 - 360DEG
 C Interval: 15.0DEG
 Test Speed: HIGH
 Temperature: 25.3DEG
 Operators: Bob
 Test Date: 2022-07-20

γ Range: 0 - 180DEG
 γ Interval: 1.0DEG
 Test System: EVERFINE GO-2000B_V1 SYSTEM V2.0.270
 Humidity: 65.0%
 Test Distance: 7.030m [K=1.0000]
 Remarks:

LUMINOUS DISTRIBUTION INTENSITY DATA

Test:U:230.13V I:0.0386A P:6.8163W PF:0.7678 Freq:50.00Hz Lamp Flux:685.311x1 lm																		
NAME: Guard-7W									TYPE:4000K					WEIGHT:				
SPEC.:									DIM.:					SERIAL No.:				
MFR.:									SUR.:					Shielding Angle:				

Table--1

UNIT: cd

C (DEG) γ (DEG)	0	15	30	45	60	75	90	105	120	135	150	165	180	195	210	225	240	255	270
0	679	678	678	677	676	676	675	675	675	675	675	676	679	678	678	677	676	676	675
5	679	678	677	677	675	673	670	666	662	658	652	649	652	647	646	645	649	651	657
10	647	650	659	673	681	682	672	657	640	624	603	596	602	593	591	585	583	583	596
15	585	591	597	603	609	618	602	582	562	541	514	513	526	515	512	502	511	515	527
20	487	490	503	514	510	525	499	484	467	441	419	425	442	437	434	427	430	421	432
25	390	397	413	418	412	412	402	398	377	359	348	344	362	358	352	346	348	338	352
30	312	321	333	338	333	326	321	322	301	295	276	266	270	257	247	239	247	250	264
35	237	252	258	260	249	250	240	235	223	218	203	189	186	173	169	165	166	170	178
40	167	177	178	178	173	170	164	161	153	147	136	128	126	117	114	111	112	113	122
45	112	120	123	122	119	117	112	110	107	102	93.8	89.2	89.3	84.1	80.4	77.2	76.3	74.6	78.1
50	78.3	84.4	86.6	87.6	84.6	82.9	80.2	80.4	77.7	74.4	69.6	66.8	66.1	61.8	59.5	56.5	55.0	53.9	55.5
55	57.5	61.2	63.0	63.8	61.2	59.4	57.1	56.6	54.5	52.6	49.2	47.2	47.1	44.0	42.4	39.7	39.3	38.7	40.7
60	40.0	42.4	43.2	43.2	41.6	40.2	38.5	37.8	36.3	34.9	32.4	31.1	31.7	29.7	28.7	27.1	26.8	26.4	28.0
65	26.0	27.5	28.1	28.0	26.5	25.4	24.0	23.6	22.5	21.5	19.9	19.3	20.1	19.2	18.7	17.7	17.5	17.4	18.5
70	15.7	16.6	16.9	16.7	15.5	14.6	13.8	13.6	13.1	12.7	11.8	11.7	12.4	12.1	11.9	11.4	11.6	11.7	12.3
75	9.33	9.73	9.68	9.53	8.92	8.62	8.12	7.83	7.46	7.29	7.01	7.02	7.51	7.26	7.27	7.21	7.49	7.71	8.19
80	5.13	5.37	5.38	5.37	5.06	4.94	4.56	4.37	3.99	3.90	3.58	3.61	3.95	3.74	3.71	3.61	3.82	3.95	4.38
85	1.93	2.14	2.25	2.29	1.96	1.79	1.49	1.40	1.31	1.25	1.16	1.13	1.22	1.18	1.17	1.18	1.24	1.34	1.60
90	0.16	0.19	0.12	0.06	0.02	0.01	0.01	0.01	0.01	0.01	0.01	0.01	0.01	0.01	0.01	0.01	0.01	0.01	0.01
95	0.01	0.02	0.01	0.01	0.01	0.01	0.01	0.01	0.02	0.01	0.02	0.01	0.02	0.02	0.01	0.02	0.01	0.02	0.02
100	0.01	0.03	0.01	0.03	0.01	0.03	0.01	0.03	0.01	0.05	0.02	0.05	0.05	0.01	0.05	0.02	0.05	0.01	0.04
105	0.02	0.06	0.03	0.06	0.02	0.05	0.02	0.06	0.03	0.08	0.04	0.08	0.08	0.05	0.09	0.05	0.09	0.04	0.08
110	0.08	0.10	0.05	0.09	0.05	0.09	0.06	0.10	0.08	0.12	0.09	0.13	0.13	0.10	0.14	0.10	0.14	0.09	0.13
115	0.12	0.15	0.10	0.14	0.10	0.14	0.10	0.15	0.14	0.17	0.15	0.20	0.19	0.17	0.21	0.17	0.21	0.17	0.19
120	0.20	0.22	0.17	0.21	0.16	0.20	0.18	0.22	0.21	0.26	0.25	0.29	0.29	0.27	0.31	0.28	0.30	0.26	0.29
125	0.30	0.32	0.27	0.30	0.26	0.30	0.28	0.33	0.32	0.38	0.37	0.43	0.41	0.40	0.45	0.41	0.43	0.39	0.41
130	0.45	0.46	0.41	0.43	0.40	0.44	0.42	0.48	0.48	0.55	0.54	0.60	0.58	0.56	0.61	0.58	0.61	0.56	0.58
135	0.64	0.64	0.59	0.61	0.58	0.61	0.60	0.67	0.69	0.75	0.76	0.81	0.78	0.77	0.82	0.80	0.82	0.77	0.78
140	0.86	0.86	0.81	0.83	0.80	0.84	0.83	0.90	0.92	1.00	1.01	1.06	1.03	1.03	1.07	1.05	1.07	1.03	1.03
145	1.13	1.13	1.08	1.09	1.06	1.10	1.11	1.18	1.20	1.28	1.28	1.34	1.31	1.30	1.34	1.32	1.35	1.31	1.30
150	1.41	1.40	1.35	1.36	1.34	1.38	1.39	1.46	1.48	1.55	1.57	1.63	1.60	1.60	1.63	1.62	1.64	1.60	1.59
155	1.70	1.69	1.64	1.65	1.63	1.67	1.68	1.75	1.76	1.84	1.85	1.92	1.89	1.89	1.93	1.91	1.92	1.88	1.87
160	1.98	1.98	1.93	1.94	1.92	1.96	1.97	2.03	2.04	2.11	2.13	2.19	2.17	2.17	2.21	2.19	2.20	2.15	2.14
165	2.27	2.27	2.22	2.23	2.22	2.25	2.26	2.31	2.32	2.37	2.38	2.44	2.42	2.42	2.45	2.43	2.44	2.39	2.39
170	2.52	2.53	2.49	2.51	2.48	2.51	2.50	2.55	2.55	2.60	2.60	2.64	2.62	2.60	2.64	2.61	2.64	2.59	2.59
175	2.71	2.73	2.69	2.72	2.68	2.72	2.69	2.74	2.71	2.75	2.73	2.78	2.77	2.76	2.77	2.74	2.76	2.73	2.75
180	2.82	2.83	2.81	2.81	2.79	2.80	2.79	2.80	2.78	2.78	2.79	2.79	2.82	2.82	2.83	2.81	2.81	2.79	2.79

C Range: 0 - 360DEG
C Interval: 15.0DEG
Test Speed: HIGH
Temperature:25.3DEG
Operators:Bob
Test Date:2022-07-20

γ Range: 0 - 180DEG
γ Interval: 1.0DEG
Test System:EVERFINE GO-2000B_V1 SYSTEM V2.0.270
Humidity:65.0%
Test Distance:7.030m [K=1.0000]
Remarks:

LUMINOUS DISTRIBUTION INTENSITY DATA

Test:U:230.13V I:0.0386A P:6.8163W PF:0.7678 Freq:50.00Hz Lamp Flux:685.311x1 lm		
NAME: Guard-7W	TYPE:4000K	WEIGHT:
SPEC.:	DIM.:	SERIAL No.:
MFR.:	SUR.:	Shielding Angle:

Table--2

UNIT: cd

C (DEG) γ (DEG)	285	300	315	330	345														
0	675	675	675	675	676														
5	663	672	676	682	682														
10	608	627	642	656	655														
15	533	557	574	593	591														
20	439	463	491	512	516														
25	365	387	413	422	415														
30	278	298	318	331	323														
35	190	201	216	234	237														
40	125	135	144	154	162														
45	82.0	90.0	96.9	106	113														
50	59.1	64.6	68.6	74.0	77.4														
55	42.9	47.3	51.0	55.0	56.8														
60	29.9	33.3	35.6	38.8	40.0														
65	19.9	22.3	24.1	25.9	26.5														
70	13.0	14.4	15.5	16.5	16.3														
75	8.62	9.33	9.76	10.1	9.82														
80	4.72	5.22	5.40	5.53	5.43														
85	1.78	2.07	2.07	2.25	2.06														
90	0.12	0.33	0.36	0.40	0.31														
95	0.01	0.02	0.01	0.02	0.00														
100	0.01	0.04	0.01	0.03	0.00														
105	0.04	0.07	0.03	0.06	0.03														
110	0.08	0.12	0.08	0.10	0.06														
115	0.15	0.18	0.14	0.16	0.12														
120	0.24	0.27	0.22	0.24	0.20														
125	0.37	0.39	0.33	0.35	0.30														
130	0.53	0.55	0.48	0.49	0.44														
135	0.74	0.74	0.67	0.67	0.61														
140	0.97	0.96	0.90	0.89	0.83														
145	1.24	1.23	1.16	1.14	1.09														
150	1.53	1.51	1.44	1.42	1.36														
155	1.81	1.79	1.72	1.70	1.64														
160	2.09	2.07	2.00	1.99	1.94														
165	2.34	2.33	2.27	2.27	2.22														
170	2.54	2.55	2.50	2.51	2.47														
175	2.71	2.72	2.67	2.69	2.66														
180	2.79	2.79	2.78	2.79	2.79														

C Range: 0 - 360DEG
C Interval: 15.0DEG
Test Speed: HIGH
Temperature:25.3DEG
Operators:Bob
Test Date:2022-07-20

γ Range: 0 - 180DEG
γ Interval: 1.0DEG
Test System:EVERFINE GO-2000B_V1 SYSTEM V2.0.270
Humidity:65.0%
Test Distance:7.030m [K=1.0000]
Remarks: